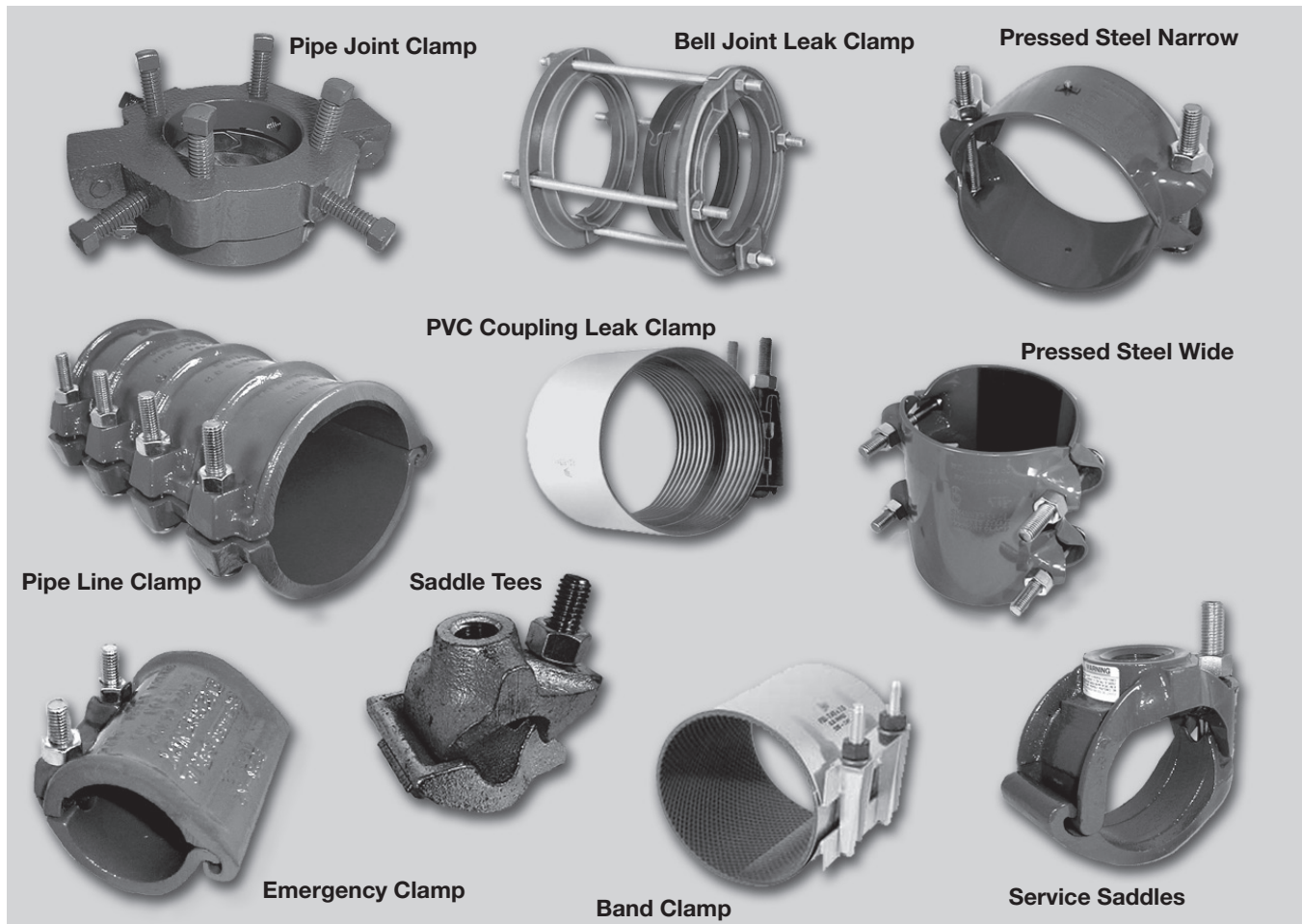


THE SKINNER



COMPANY

## Skinner Repair Clamps, Service Saddles, Saddle Tees, and Drilling Devices



## 2014 Product Catalog & Price Schedule

Effective January 1st, 2014

Manufacturer's Suggested List Prices

Prices Are Subject to Change Without Advance Notice

Order by Part Number

SKINNER-SEAL®

[www.skinnerco.com](http://www.skinnerco.com)

[sales@skinnerco.com](mailto:sales@skinnerco.com)





## Emergency Pipe Clamp

### Repairs Pit Holes, Splits and Corrosion Leaks



#### Model "EM"

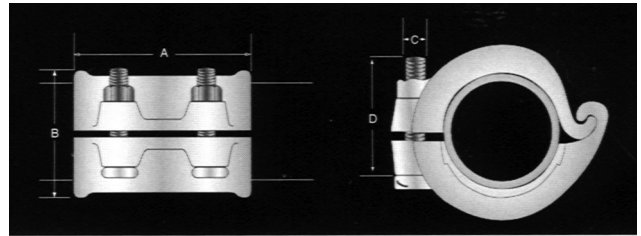
***Applied in seconds outlast the pipe itself***

The Emergency Pipe Clamp is used for repairing pit holes, splits and corrosion leaks in both steel, ductile and cast iron pipe lines. The clamp is totally effective under extreme pressure or temperature. For over 100 years, the Emergency Pipe Clamp has been the universal repair clamp worldwide.

The clamp can be used on pipes for gas, water, oil or ammonia. The repair lasts for years.

The Emergency Pipe Clamp offers triple savings. These savings include: the cost of new pipe, the time and labor of replacing old pipe, and the expense of shutting down while work is being done. This can amount to thousands of dollars.

Installation of the Emergency Pipe Clamp is easy. Because of the long open hinge, the two halves of the clamp slide together along the pipe when conditions are crowded. The clamp is usually put on under pressure, without interruption of service. The gasket which is cemented into a slight recess in the bottom half cannot "blow out". Bolts can be inserted from either side so that the clamp can be installed easily under the most awkward conditions. The Emergency Pipe Clamp is made of ductile iron, strongly proportioned, and fitted with sturdy, electroplated Grade 5 steel bolts. All clamps are E-coated (black) to resist rust. Gaskets are Buna-N. Max Temp 250°F



### Specifications

Size Pipe, IPS (inches)	1/2	3/4	1	1 1/4	1 1/2	2	2 1/2	3
Length "A" (inches)	3 1/4	3 1/4	3 1/2	3 3/4	4	4 1/4	4 1/2	4 3/4
Width "B" (inches)	1 3/4	2	2 3/8	2 3/4	3 1/8	3 5/8	4 1/4	4 3/4
Bolt Diameter "C" (inches)	5/16	5/16	3/8	3/8	3/8	7/16	1/2	1/2
Bolt Length "D" (inches)	2	2	2 1/2	2 1/2	2 1/2	2 3/4	3 1/2	3 1/2
Number of Bolts	2	2	2	2	2	2	2	2

Size Pipe, IPS (inches)	4	5	6	8	10	12
Length "A" (inches)	6	7 1/8	8	9 7/8	11 7/8	12
Width "B" (inches)	6 1/4	7 1/2	8 1/2	10 7/8	13	15 1/8
Bolt Diameter "C" (inches)	1/2	1/2	1/2	5/8	5/8	5/8
Bolt Length "D" (inches)	4	4	4	5	5	5
Number of Bolts	2	3	3	3	4	4



## Price Schedule

EMERGENCY CLAMPS				BOLTS ONLY		
Size (inches)	Part Number	Sugg. List Price	Approx. Weight (lbs.)	Size (inches)	Part Number	Sugg. List Price Each
1/2	089906	\$ 34.00	1.25	5/16 x 2	080098	\$ 2.30
3/4	089905	\$ 36.00	1.5	5/16 x 2	080098	\$ 2.30
1	089904	\$ 38.00	1.75	3/8 x 2 1/2	080100	\$ 2.30
1 1/4	089903	\$ 42.00	2.62	3/8 x 2 1/2	080100	\$ 2.30
1 1/2	089902	\$ 46.00	3.5	3/8 x 2 1/2	080100	\$ 2.30
2	089899	\$ 52.00	3.75	7/16 x 2 3/4	080102	\$ 2.30
2 1/2	089896	\$ 62.00	4.75	1/2 x 3 1/2	080103	\$ 3.50
3	089891	\$ 68.00	6	1/2 x 3 1/2	080103	\$ 3.50
3 1/2	089889	\$ 100.00	8	1/2 x 4	080104	\$ 5.80
4	089888	\$ 110.00	10	1/2 x 4	080104	\$ 5.80
5	089886	\$ 190.00	15	1/2 x 4	080104	\$ 5.80
6	089885	\$ 290.00	18	1/2 x 4	080104	\$ 5.80
8	089883	\$ 360.00	32.5	5/8 x 5	080864	\$ 9.40
10	089882	\$ 845.00	50	5/8 x 5	080864	\$ 9.40
12	089881	\$ 870.00	58	5/8 x 5	080864	\$ 9.40

## Installation Procedure

## Emergency Pipe Clamp

1. Thoroughly clean the damaged area of pipe with a wire brush. This will help insure a bubble tight gasket seal.
2. Place the Clamp around the pipe so that the leak is fully covered by the gasket.
3. Tighten the bolts evenly to the recommended torque (see table below).
4. Pressure test the completed installation for leaks.
5. Check for leaks before leaving.

Size (inches)	Torque	Working Pressure	Size (inches)	Torque	Working Pressure
1/2	10 ft.lbs.	600 psi	3	40 ft.lbs.	500 psi
3/4	10 ft.lbs.	600 psi	3 1/2	40 ft.lbs.	500 psi
1	18 ft.lbs.	600 psi	4	50 ft.lbs.	500 psi
1 1/4	18 ft.lbs.	600 psi	5	50 ft.lbs.	450 psi
1 1/2	18 ft.lbs.	600 psi	6	50 ft.lbs.	400 psi
2	40 ft.lbs.	600 psi	8	60 ft.lbs.	300 psi
2 1/2	40 ft.lbs.	600 psi	10	60 ft.lbs.	200 psi
			12	60 ft.lbs.	200 psi



## Pipeline Clamp

### For Long Splits or Extensive Corrosion



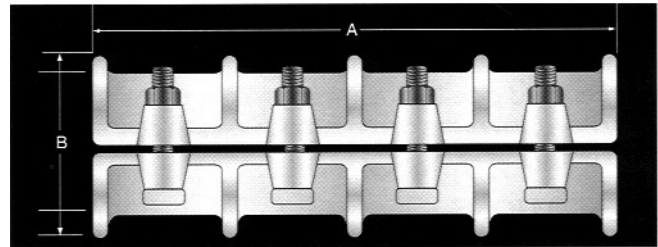
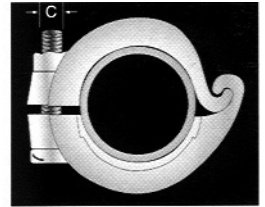
Model "PL"

There is nothing like the Skinner Pipeline Clamp for long splits in pipe or extensive corrosion resulting in a series of pit holes. It has the same construction as the Emergency Pipe Clamp except it is double in length. The ample weight of this clamp gives a generous margin of safety for high pressure work.

With bolts on only one side and a hinge along the other, it can very quickly be installed under pressure, without interruption of service.

The Pipeline Clamp is made of ductile iron, heavily reinforced design throughout, equipped with a special crescent-shaped pressure-equalizing gasket for each individual pipe size and cemented in place.

Gasket is BunaN. Max Temp 250°F



## Specifications

Size Pipe, IPS (inches)	3/4	1	1 1/4	1 1/2	2	3	4	6
Length "A" (inches)	7 1/2	8	8 1/2	9	10	11	12	14
Width "B" (inches)	2 1/8	2 1/2	2 3/4	3	3 5/8	5 1/4	6 1/4	8 1/2
Bolt Diameter "C" (inches)	5/16	3/8	3/8	3/8	7/16	1/2	1/2	5/8
Bolt Length "D" (inches)	2	2 1/2	2 1/2	2 1/2	2 3/4	3 1/2	3 1/2	5
Number of Bolts	4	4	4	4	4	4	4	4



## Price Schedule

PIPELINE CLAMPS				BOLTS ONLY		
Size (inches)	Part Number	Sugg. List Price	Approx. Weight (lbs.)	Size (inches)	Part Number	Sugg. List Price
3/4	089875	\$ 71.00	3.75	5/16 x 2	080098	\$ 2.30
1	089874	\$ 86.00	4.12	3/8 x 2 1/2	080100	\$ 2.30
1 1/4	089873	\$ 115.00	4.75	3/8 x 2 1/2	080100	\$ 2.30
1 1/2	089872	\$ 135.00	6.5	7/16 x 2 3/4	080102	\$ 2.30
2	089871	\$ 160.00	9	1/2 x 3 1/2	080103	\$ 3.50
3	089869	\$ 200.00	15	1/2 x 3 1/2	080103	\$ 3.50
4	089868	\$ 235.00	17.5	1/2 x 3 1/2	080103	\$ 3.50
6	089866	\$ 440.00	31.5	5/8 x 5	080864	\$ 9.40

## Installation Procedure

## Pipeline Clamp

1. Thoroughly clean the damaged area of pipe with a wire brush. This will help insure a bubble tight gasket seal.
2. Place the Clamp around the pipe so that the leak is fully covered by the gasket.
3. Tighten the bolts evenly to the recommended torque (see table below).
4. Pressure test the completed installation for leaks.
5. Check for leaks before leaving.

Size (inches)	Torque	Working Pressure	Size (inches)	Torque	Working Pressure
3/4	10 ft. lbs.	600 psi	2	25 ft. lbs.	500 psi
1	15 ft. lbs.	500 psi	3	40 ft. lbs.	400 psi
1 1/4	18 ft. lbs.	500 psi	4	40 ft. lbs.	300 psi
1 1/2	18 ft. lbs.	500 psi	6	60 ft. lbs.	300 psi

**BAND CLAMP****MODEL BCEC****Snap Band Clamp**

3" WIDE				6" WIDE		
Size	Part #	Suggested List Price	Approx. Wt. (lbs.)	Part #	Suggested List Price	Approx. Wt. (lbs.)
1/2"	089999	\$ 14.00	0.40	089983	\$ 26.00	1.00
3/4"	089998	\$ 15.00	0.50	089982	\$ 27.00	1.10
1"	089997	\$ 16.00	0.55	089981	\$ 29.00	1.15
1 1/4"	089996	\$ 17.00	0.65	089980	\$ 30.00	1.20
1 1/2"	089995	\$ 18.00	0.65	089979	\$ 32.00	1.25
2"	089994	\$ 19.00	1.00	089978	\$ 34.00	2.15
3"	089991	\$ 25.00	1.10	089975	\$ 50.00	2.30
4"	089989	\$ 29.00	1.25	089972	\$ 53.00	2.45
6"	089985	\$ 34.00	1.25	089967	\$ 67.00	2.85
8"	089984	\$ 40.00	1.65	089966	\$ 78.00	3.25

- Clamp for small pinhole leaks.
- Band is 304 Stainless Steel
- Gasket material is BunaN Rubber
- Nodular Iron Lugs and alloy bolts with Heavy Hex nuts
- **Sizes 1/2" through 8" in 3" or 6" widths. Also 2"- 8" in 9", 12" width. Contact factory for quote.**
- Pressure Rating: 300 psi max.
- Temperature Rating: 250°F

Model BCEC Band Clamp design allows for quick one-man installation. Bolts fit into iron lugs without removing nuts.

Installation Procedure:

- Thoroughly clean the damaged area with a wire brush. This will assure a bubble tight gasket seal.
- Back off the nuts to the ends of the bolt, but do not remove them. Separate the clamp.
- Center the clamp gasket over the area that needs repair. Make sure the gasket extends past damaged area.
- Relocate the bolt heads securely into their receiving lugs. Tighten 3/8" bolts to 25 ft/lbs, 7/16" bolts 35 ft/lbs on 2" & larger size.
- Pressure test for leaks before leaving area.

**BAND CLAMP****MODEL BCFC****Full Circle Band Clamp**

3" WIDE				6" WIDE		
Size	Part #	Suggested List Price	Approx. Wt. (lbs.)	Part #	Suggested List Price	Approx. Wt. (lbs.)
3/4"	089930	\$ 42.00	0.70	089936	\$ 88.00	1.40
1"	089931	\$ 44.00	0.75	089937	\$ 89.00	1.50
1 1/4"	089932	\$ 46.00	0.83	089938	\$ 90.00	1.65
1 1/2"	089933	\$ 48.00	0.90	089939	\$ 91.00	1.85
2"	089934	\$ 51.00	1.50	089940	\$ 94.00	3.00

- Features 360 degree gasket for added reliability.
- Band is 304 Stainless Steel
- Gasket material is Buna-N Rubber
- Nodular Iron Lugs & alloy bolts w/Hex nuts.
- Sizes 3/4" through 2" in 3" or 6" widths
- Pressure Rating: 300 psi max.
- Temperature Rating: 250°F

Model BCFC Full Circle Band Clamp design is similar to the above Model BCEC Band Clamp but features a full circle gasket for added reliability.

Installation Procedure:

- Thoroughly clean the damaged area with a wire brush. This will assure a bubble tight gasket seal.
- Back off the nuts to the ends of the bolt, but do not remove them. Separate the clamp.
- Make sure the gasket extends past damaged area.
- Relocate the bolt heads securely into their receiving lugs. Tighten 3/8" bolts to 25 ft/lbs, 7/16" bolts 35 ft/lbs on 2" size.
- Pressure test for leaks before leaving area.

**BAND CLAMP****MODEL BCSB****All Stainless Steel Single Band**

7 1/2" WIDTH				12 1/2" WIDTH		
Size	Part #	Suggested List Price	Approx. Wt. (lbs.)	Part #	Suggested List Price	Approx. Wt. (lbs.)
2"	<b>089941</b>	\$ 102.00	4	<b>089948</b>	\$ 146.00	5
3"	<b>089942</b>	\$ 120.00	5	<b>089949</b>	\$ 175.00	6
4"	<b>089943</b>	\$ 126.00	6	<b>089950</b>	\$ 203.00	8
6"	<b>089944</b>	\$ 153.00	7	<b>089951</b>	\$ 245.00	10
8"	<b>089945</b>	\$ 179.00	8	<b>089952</b>	\$ 288.00	11
10"	<b>089946</b>	\$ 246.00	11	<b>089953</b>	\$ 386.00	16
12"	<b>089947</b>	\$ 281.00	13	<b>089954</b>	\$ 448.00	18

Model BC-SB all Stainless Steel Single Section Band Clamp design allows for quick one-man installation. Excellent design for applications on corrosive materials or on buried water mains where corrosive soil is present. Bolts fit into lugs without removing nuts.

## Installation Procedure:

- Thoroughly clean the damaged area with a wire brush. This will assure a bubble tight gasket seal.
- Back off the nuts to the ends of the bolt, but do not remove them. Separate the clamp.
- Center the clamp gasket over the area that needs repair. Make sure the gasket extends past damaged area.
- Relocate the bolt heads securely into their receiving lugs.
- Pressure test for leaks before leaving area.
- Bolt Torque: 1/2" bolts 50-60 ft/lbs, 3/4" bolts 90-100 ft/lbs.



- 18-8 Type 304 Stainless Steel band
- 18-8 Type 304 Stainless Steel Bolts & Nuts
- Gasket material is Buna-N Rubber
- Side Bars and Lifter Bar 188 Stainless Steel
- **Sizes 2" through 12" in 7.5" or 12.5" widths. Also 6", 10", 15", 20", 24", 30" width. Contact Factory for quote.**
- Temperature Rating: 250°F
- Max Pressure Rating:
 

2" - 500 psi	8" - 250 psi
3" - 450 psi	10" - 200 psi
4" - 450 psi	12" - 175 psi
6" - 350 psi	

**BAND CLAMP****MODEL BCDB****All Stainless Steel Double Band**

7 1/2" WIDTH				12 1/2" WIDTH		
Size	Part #	Suggested List Price	Approx. Wt. (lbs.)	Part #	Suggested List Price	Approx. Wt. (lbs.)
4"	<b>089956</b>	\$ 193.00	11	<b>089961</b>	\$ 295.00	18
6"	<b>089957</b>	\$ 222.00	12	<b>089962</b>	\$ 335.00	19
8"	<b>089958</b>	\$ 255.00	13	<b>089963</b>	\$ 370.00	21
10" WIDTH				12 1/2" WIDTH		
10"	<b>089959</b>	\$ 418.00	18	<b>089964</b>	\$ 583.00	23
12"	<b>089960</b>	\$ 478.00	19	<b>089965</b>	\$ 656.00	25

Model BC-DB all Stainless Steel Double Band Clamp design allows for quick one-man installation. Excellent design for applications on corrosive materials or on buried water mains where corrosive soil is present. Bolts fit into lugs without removing nuts.

## Installation Procedure:

- Thoroughly clean the damaged area with a wire brush. This will assure a bubble tight gasket seal.
- Back off the nuts to the ends of the bolt, but do not remove them. Separate the clamp halves.
- Center the clamp gasket over the area that needs repair. Make sure the gasket extends past damaged area.
- Relocate the bolt heads securely into their receiving lugs.
- Pressure test for leaks before leaving area.
- Bolt Torque: 1/2" bolts 50-60 ft/lbs., 3/4" bolts 90-100 ft/lbs.



- 18-8 Type 304 Stainless Steel band
- 18-8 Type 304 Stainless Steel Bolts & Nuts
- Gasket material is Buna-N Rubber
- Side Bars and Lifter Bar 188 Stainless Steel
- Sizes 4" through 8" in 7.5" or 12.5" widths
- **Sizes 10" through 16" in 10" or 12.5" widths. Also 10", 15", 20", 24", 30" width. Contact factory for quote.**
- Temperature Rating: 250°F
- Pressure Rating:
 

4" - 450 psi	10" - 325 psi
6" - 400 psi	12" - 325 psi
8" - 350 psi	14" - 300 psi
	16" - 300 psi



## Pressed Steel Clamp

### Repairs Badly Pitted and Corroded Pipe Lines



Model "PS" Wide

Model "PS" Narrow



The Pressed Steel Clamp is used for repairing badly pitted and corroded pipe lines at minimum cost.

This is not a thin spring-steel band with attached lugs. It is a 3/16 thick, heavy steel plate with inseparable wedge-shaped lugs pressed out of the material itself. This special construction prevents any give or collapse of the lug so that the full amount of take-up pressure applied by the bolts is transmitted directly to the gasket over the leak. While the clamp is heavy enough to outlast the pipe, it is still sufficiently flexible to conform to the pipe surface.

The Pressed Steel Clamp is available in two widths:

**Narrow:** 4" wide for pit holes, complete with Cone Plug Gasket fastened in place.

**Wide:** 8" wide for running corrosion spots, complete with a crescent-shaped, pressure-equalizing gasket of Skinner Special Composition for use on oil or gas lines.

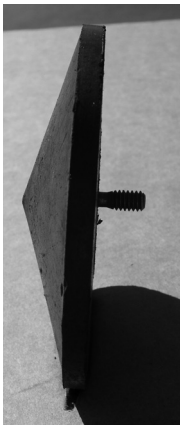
Large 5/8" diameter steel bolts, plated and Iridite-dipped, are furnished with all clamps.

**NOTE:** Narrow type in sizes 3" OD through 12" comes with CP2NE Cone Plug. Narrow type in sizes 14" OD and up comes with CP2NF Cone Plug. Wide type in sizes 4" OD through 6" comes with SGNC #168 Strip Gasket. Wide type in sizes 8" and up come with SGN #148 Strip Gasket. 5/8" x 5" Bolts and Nuts are standard on above clamps.

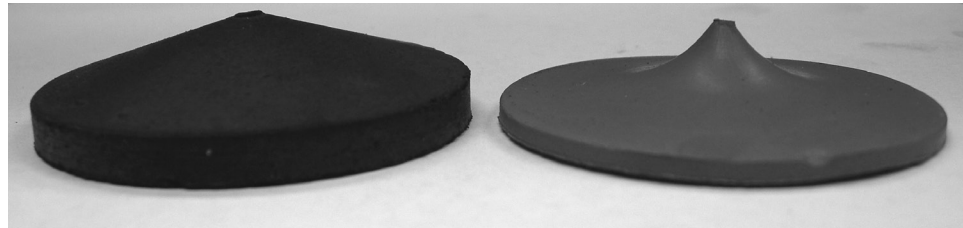
Strip gaskets are Buna-N compound. Cone Plugs are Buna N but are also available as spares in either Buna-N (Black) or Natural Rubber (Red). Temperature Rating 250°F

### Price Schedule

NARROW STYLE				WIDE STYLE		
Size (inches)	Part Number	Sugg. List Price	Approx. Weight (lbs.)	Part Number	Sugg. List Price	Approx. Weight (lbs.)
3	089624	\$ 76.00	3.5	089625	\$113.00	7.0
4 OD	089623	\$ 101.00	3.75			
4	089621	\$ 81.00	4	089620	\$ 123.00	8.5
5	089617	\$ 96.00	5	089616	\$ 176.00	10.5
6 OD	089615	\$ 96.00	5			
6	089613	\$ 96.00	5.5	089612	\$ 134.00	11.25
8	089607	\$ 108.00	7	089606	\$ 159.00	14
10	089603	\$ 128.00	8	089602	\$ 213.00	17
12	089600	\$ 134.00	9	089599	\$ 239.00	19
14	089598	\$ 149.00	10	089597	\$ 277.00	20.5
16	089596	\$ 186.00	11.5	089595	\$ 287.00	23
18	089594	\$ 233.00	12.5	089593	\$ 347.00	26
20	089592	\$ 260.00	14	089591	\$ 351.00	28.5
24	089589	\$ 293.00	17.5	089588	\$ 394.00	33.5



Cone Plug w/fastener

Cone Plug - Black (Buna-N)  
Max Temp 250°FCone Plug - Red (Natural Rubber)  
Max Temp 250°F**Extra Cone Plugs for Narrow Style Clamps**

continued on next page...

Sizes			Natural Rubber (Red)								
Thickness at Base			1/8			1/4			1/2		
Cone Plug	Diameter (inches)		Code	Part Number	Sugg. List Price	Code	Part Number	Sugg. List Price	Code	Part Number	Sugg. List Price
#1	1 9/16	w/o Fastener	CP1A	082007	\$ 6.00	CP1B	082013	\$ 8.20	CP1C	082024	\$ 7.80
		w/ Fastener				CP1E	082019	\$ 8.20			
#2	2 5/16	w/o Fastener	CP2A	082009	\$ 6.00	CP2B	082015	\$ 6.00	CP2C	082026	\$ 8.20
		w/ Fastener				CP2E	082020	\$ 8.20			
#3	3 1/2	w/o Fastener	CP3A	082011	\$ 10.50	CP3B	082017	\$ 10.50	CP3C	082028	\$ 14.00
		w/ Fastener				CP3E	082022	\$ 11.70			
			Buna-N (Black)								
#1	1 9/16	w/o Fastener	CP1NA	082006	\$ 6.00	CP1NB	082012	\$ 7.30	CP1NC	082023	\$ 8.20
		w/ Fastener				CP1NE	082018	\$ 8.20			
#2	2 3/16	w/o Fastener	CP2NA	082008	\$ 6.00	CP2NB	082014	\$ 6.00	CP2NC	082025	\$ 8.20
		w/ Fastener				CP2NE	080865*	\$ 8.20			
#3	3 1/2	w/o Fastener	CP3NA	082010	\$ 10.50	CP3NB	082016	\$ 10.50	CP3NC	082027	\$ 14.00
		w/ Fastener				CP3NE	082021	\$ 11.70			

\* Standard for all 4"-12"

\*\* Standard for all 14"-24"

**Extra Strip Gaskets (Buna-N) for Wide Style Clamps**

Number	For Sizes	Part Number	Sugg. List Price
#168	Used on 4" - 6"	080857	\$ 13.40
#148	Used on 8" and up	080858	\$ 13.40



...continued from previous page.

## Installation Procedure

## Pressed Steel Clamp

1. Thoroughly clean the damaged area of pipe with a wire brush. This will help insure a bubble tight gas-ket seal.
2. Use a Narrow Clamp with a Cone Plug Gasket to seal pit holes .
3. Use a Wide Clamp with a larger, crescentshaped gasket to seal corrosion spots.
4. Place the clamp around the pipe so that the leak is fully covered by the gasket.
5. Tighten the bolts evenly to the recommended torque (see table below).
6. Pressure test the completed installation for leaks.
7. Check for leaks before leaving.

Narrow			Wide	
Size	Torque	Working Pressure	Torque	Working Pressure
3"	60 ft/lbs	1000 psi	60 ft/lbs	500 psi
4"	60 ft/lbs	1000 psi	60 ft/lbs	500 psi
5"	60 ft/lbs	1000 psi	60 ft/lbs	500 psi
6"	60 ft/lbs	1000 psi	60 ft/lbs	500 psi
8"	60 ft/lbs	1000 psi	60 ft/lbs	400 psi
10"	60 ft/lbs	1000 psi	60 ft/lbs	400 psi
12"	60 ft/lbs	1000 psi	60 ft/lbs	300 psi
14"	60 ft/lbs	1000 psi	60 ft/lbs	300 psi
16"	60 ft/lbs	800 psi	60 ft/lbs	300 psi
18"	60 ft/lbs	800 psi	60 ft/lbs	200 psi
20"	60 ft/lbs	800 psi	60 ft/lbs	200 psi
24"	60 ft/lbs	800 psi	60 ft/lbs	200 psi



## Spare Gaskets

Gasket Part No.	Where Used	Clamp Size	Sugg. List Price
080082	Emergency Clamp	1/2", 3/4" & 1"	\$ 2.20
080083	Emergency Clamp	1 1/4" & 1 1/2"	\$ 2.20
080085	Emergency Clamp	2" & 2 1/2"	\$ 2.20
080087	Emergency Clamp	3"	\$ 5.60
080088	Emergency Clamp	4"	\$ 5.60
086311	Emergency Clamp	5"	\$ 32.00
086312	Emergency Clamp	6"	\$ 32.00
086313	Emergency Clamp	8"	\$ 37.00
086314	Emergency Clamp	10" & 12"	\$ 44.00
080206	Pipe Joint Clamp	1/2"	\$ 2.20
080207	Pipe Joint Clamp	3/4"	\$ 2.20
080208	Pipe Joint Clamp	1"	\$ 2.20
080209	Pipe Joint Clamp	1 1/4"	\$ 2.20
080210	Pipe Joint Clamp	1 1/2"	\$ 2.20
080213	Pipe Joint Clamp	2"	\$ 2.20
080224	Pipe Joint Clamp	2 1/2"	\$ 2.20
080225	Pipe Joint Clamp	3"	\$ 2.20
080226	Pipe Joint Clamp	4"	\$ 2.20
080227	Pipe Joint Clamp	6"	\$ 2.20
080105	Pipe Line Clamp	3/4"	\$ 2.20
080107	Pipe Line Clamp	1 1/4" thru 2"	\$ 5.60
080106	Pipe Line Clamp	3"	\$ 9.00
080108	Pipe Line Clamp	4"	\$ 9.00
086315	Pipe Line Clamp	6"	\$ 11.00
080857	Pressed Steel Wide	4" thru 6"	\$ 13.40
080858	Pressed Steel Wide	8" thru 24"	\$ 13.40

## Carriage Type Bolts with Ash Hex Nuts

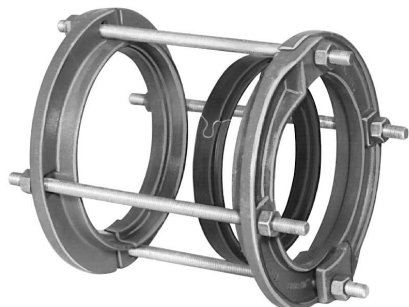


### Price Schedule

Diameter (inches)	Length	Where Used	Bolt Part Number	Sugg. List Price	Nut Part Number	Sugg. List Price
5/16	2	Emergency Clamp: 1/2" & 3/4" Pipeline Clamp: 3/4"	080098	\$ 2.30	080097	\$ 1.30
3/8	2 1/2	Emergency Clamp: 1", 1 1/4" & 1 1/2" PipeLine Clamp: 1 1/4" & 1 1/2"	080100	\$ 2.30	080099	\$ 1.30
7/16	2 3/4	Emergency Clamp: 2" PipeLine Clamp: 2" Saddle Tees: All Sizes	080102	\$ 2.30	080101	\$ 1.30
1/2	3 1/2	Emergency Clamp: 2 1/2", 3" & 3 1/2" PipeLine Clamp: 3" & 4"	080103	\$ 3.50	080036	\$ 1.30
1/2	4	Emergency Clamp: 4", 5" & 6"	080104	\$ 6.00	080036	\$ 1.30
5/8	5	Emergency Clamp: 8", 10" & 12" PipeLine Clamp: 6" Pressed Steel Clamp: All	080864	\$ 9.50	080309	\$ 1.30



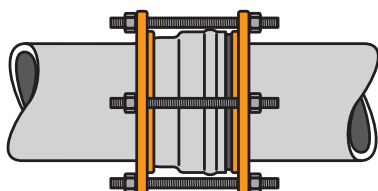
## Skinner Bell Joint Leak Clamps



### Skinner Model BJLC For Standard Steel Size PVC, Iron Pipe

Skinner Bell Joint Leak Clamps provide an easy and economical way of repairing leaking bell joints on PVC or iron pipe without recaulking or cutting out the joint.

Skinner Bell Joint Leak Clamps are easy to install. The clamp for cast iron pipe features an adjustable Buna-N gasket, field adaptable to fit either the older style pit cast or ductile iron pipe. This versatile gasket contains a removable "keyed" insert that eliminates cutting or gluing to fit the ductile iron pipe.



#### Specifications:

<b>Body:</b>	Ductile Iron ASTM A536
<b>Gasket:</b>	Buna-N rubber per ASTM D2000
<b>Bolts and Nuts:</b>	Low alloy ASTM A242 and AWWA C111
<b>Max Temp.:</b>	250°F

### Skinner Bell Joint Leak Clamps for Ductile Iron, Cast Iron Pipe (Buna-N Gasket)

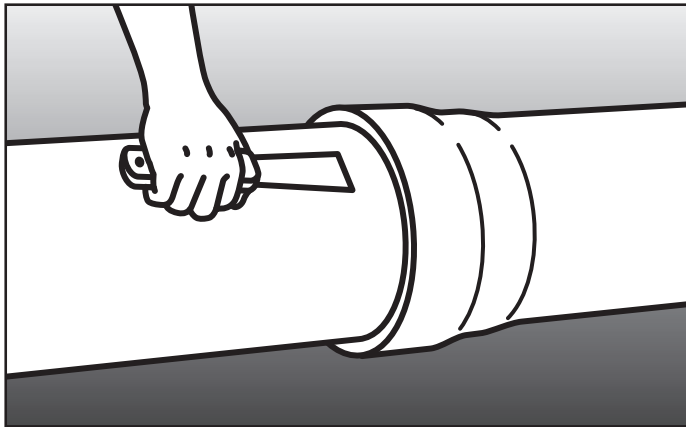
PART NUMBER	NOM. PIPE SIZE	O.D. RANGE	APPROX. WT. LBS.	NO. OF BOLTS	SUGGESTED LIST PRICE
092000	4"	4.80-5.00	16	4	\$ 232.00
092001	6"	6.90-7.10	19	4	\$ 257.00
092002	8"	9.05-9.30	21	4	\$ 355.00
092003	10"	11.10-11.40	27	6	\$ 448.00
092004	12"	13.20-13.50	31	6	\$ 485.00



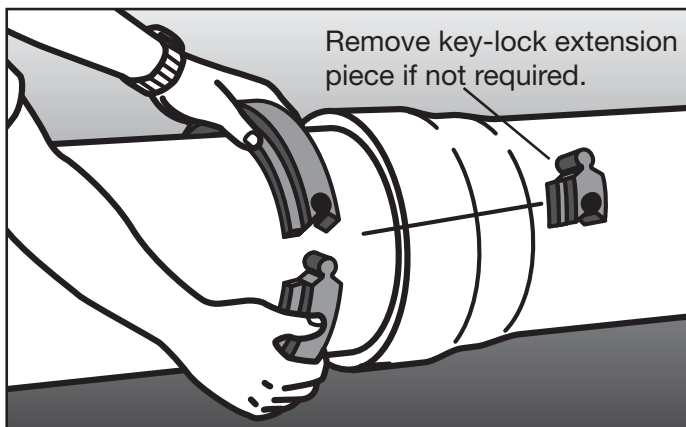
# Installation Instructions For The Skinner Model BJLC Bell Joint Leak Clamp

For use on caulked or gasketed iron pipe, and Standard Steel Sized PVC.

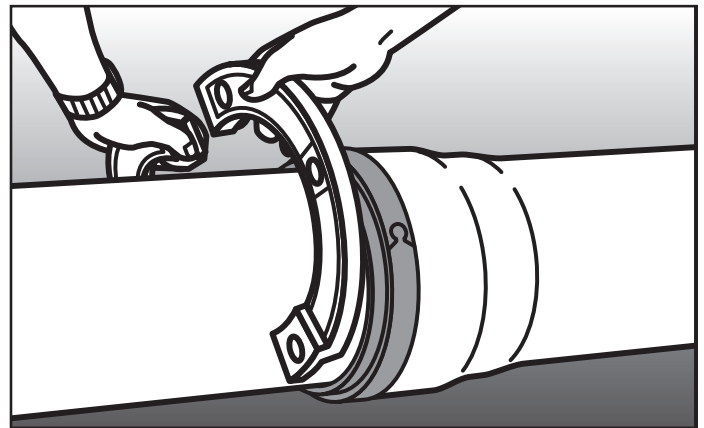
**Step 1.** Check to ensure you have the proper size and Model BJLC bell joint leak clamp for your pipe. *(Clamps for C900 PVC and Iron Pipe bell joints are not interchangeable with standard steel size PVC size clamps)*



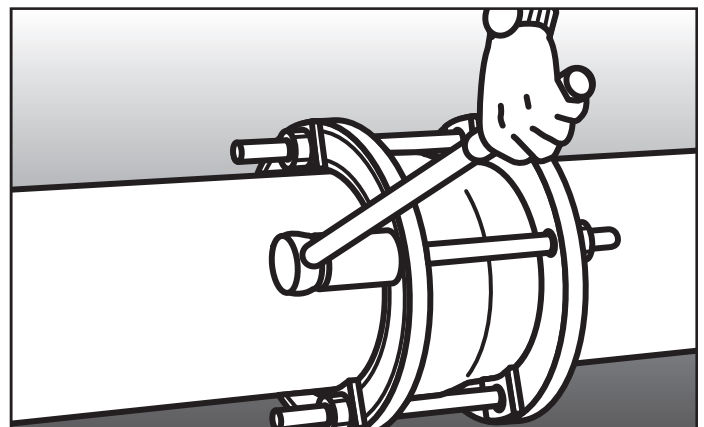
**Step 2.** Thoroughly clean the pipe surface around the bell and spigot joint. If repairing a caulked joint, make certain you have a smooth, flat surface for a proper water-tight seal.



**Step 3.** Lubricate gasket for best results. Install the gasket around the pipe and lock the ends together. The flat side of the gasket should be facing the bell. Place gasket key lock connection the maximum distance from any casting joint. Discard the gasket key-lock extension piece if pipe OD is 4.80", 6.90", 9.05", 11.10" or 13.20".



**Step 4.** Interlock the ductile iron clamp ring sections on the spigot side and slide a threaded stud or bolt through the hole halfway to hold the sections together. Proceed in the same manner for each section until the clamp ring is complete. Interlock the ductile iron clamp ring section on the bell side and slide the threaded stud or bolt, attached to the spigot side clamp, through to the bell side clamp sections. Loosely assemble nuts on the stud or bolt. Continue to assemble the bell side clamp until it is complete.



**Step 5.** Tighten the nuts evenly until the leak stops. Use of a torque wrench is highly recommended and required to ensure proper torque. For best results, wait 10-15 minutes and re-check for proper torque.

## RECOMMENDED TORQUE RANGE (FT. LBS.)

NOM. PIPE SIZE	1/2" DIA. STUDS/BOLTS	5/8" DIA. STUDS/BOLTS
2" - 4"	15-20	60-70
6" - 12"	25-30	60-70



# Skinner PVC Coupling Leak Clamps

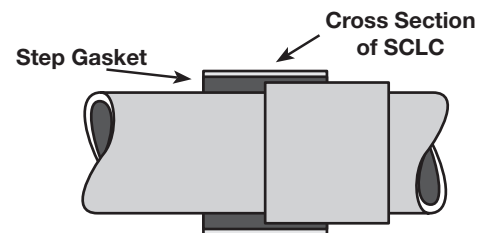
## Model SCLC - For PVC Pipe Joined with Schedule 40 Solvent Weld Couplings

Leaking solvent weld joints on PVC pipe can be repaired by shutting down the water main and splicing in a new piece of pipe. This is time consuming, expensive, and requires making additional joints in your water system. Eliminate these problems by using the Skinner Coupling Leak Clamp to repair leaking solvent welds on PVC pipe.

The Skinner Model SCLC Clamp features 2 bolts and a step gasket with a butt sealing design that stops the leak between the coupling and the PVC pipe.

### Specifications:

**Band:** 5 inch wide 18-8 Type 304 stainless steel  
**Lugs:** Ductile Iron per ASTM A536  
**Gasket:** Buna-N Rubber  
**Max Temp.:** 250°F  
**Bolts and Heavy Hex Nuts:** High strength, low alloy per ASTM A242



SKINNER PART #	NOM. PIPE SIZE	PIPE O.D.	LENGTH	APPROX. WT. LBS.	SUGGESTED LIST PRICE
091000	2"	2.38	5"	4	\$ 98.00
091001	2-1/2"	2.88	5"	5	\$ 104.00
091002	3"	3.50	5"	5	\$ 114.00
091003	3-1/2"	4.00	5"	8	\$ 124.00
091004	4"	4.50	5"	9	\$ 127.00
091005	5"	5.56	5"	10	\$ 135.00
091006	6"	6.63	5"	11	\$ 163.00
091007	8"	8.63	5"	12	\$ 180.00

## INSTALLATION PROCEDURE

### Skinner Model SCLC Repair Clamps

The successful application of a repair clamp rests heavily on the installer. We suggest the following guide lines be adopted as routine.

CHECK THE DIAMETER OF THE PIPE TO MAKE CERTAIN YOU ARE USING THE CORRECT SIZE CLAMP

### PREPARATIONS:

1. Scrape the pipe to remove as much dirt and corrosion as possible so the surface is smooth.
2. Make certain the gasket is free of foreign matter and that nothing becomes lodged between the gasket and the pipe. Successful installation requires the application of a suitable lubricant to the pipe to be repaired.
3. Use proper tools, avoid loose fitting wrenches and wrenches too short to achieve the proper torque of the nuts.
4. ALWAYS RECHECK TORQUE AND PRESSURE TEST FOR LEAKS BEFORE BACKFILLING.
5. Backfill and compact carefully around the clamp according to the pipe manufacturer's instructions.

#### Step 1.

Back off the nuts to the ends of the bolts, but do not remove them. Separate the clamp and position it on the pipe with the bolt lug section on top.

#### Step 2.

Place the thick side of the gasket on the spigot side of the pipe. Move the clamp along the pipe until the shoulder of the gasket is firmly against the edge of the bell or coupling.

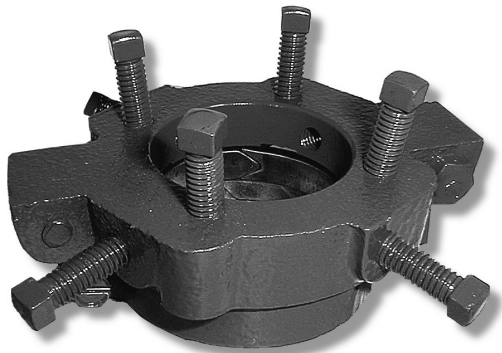
#### Step 3.

Squeeze the two lug sections together and tighten the  $\frac{5}{8}$ " bolts evenly with a balanced torque of approximately 75 ft. lbs. Small size clamps with  $\frac{1}{2}$ " bolts require an approximate torque of 50 ft. lbs. Clamps with  $\frac{3}{4}$ " bolts require an approximate torque of 95 ft. lbs.



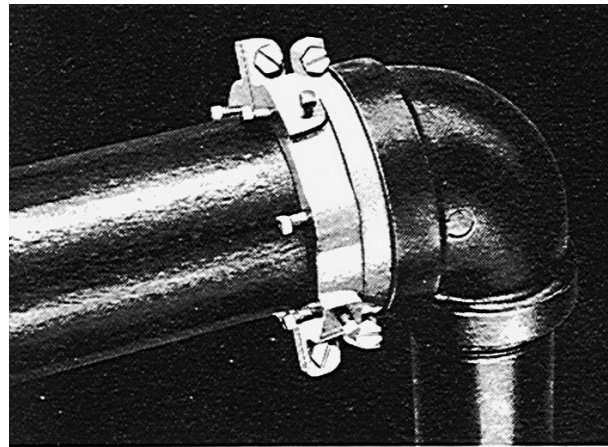
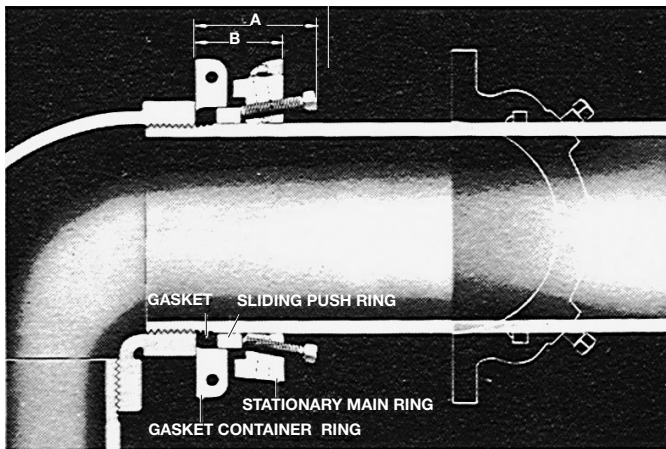
## Pipe Joint Clamp

**Stops Leaks at Joints, Where Pipe and Fitting Join**



Quickly installed under pressure, the SkinnerSEAL Pipe Joint Clamp will withstand high pressures without interruption of service.

It saves the cost of tearing out and replacing leaky fittings. It is a positive repair not hindered by vibration or expansion. For over 80 years, the Pipe Joint Clamp has been in use on piping for gas, oil, gasoline, water, ammonia and brine leaks. The sliding push ring in the clamp transmits the pressure of the thrust screws to the gasket. The gasket, which is completely confined and guided by the lip on the face of the container ring, is forced directly into the threads, stopping the leak at its source. Gasket material is Neoprene.



## Specifications

Size Pipe, IPS (inches)	1/2	3/4	1	1 1/4	1 1/2	2	2 1/2	3	4	6
Dimension A (inches)	2	2	2	2 1/4	2 1/4	2 1/4	2 1/4	2 1/2	2 1/2	2 1/2
Dimension B (inches)	1 1/4	1 1/4	1 3/8	1 3/8	1 3/8	1 3/8	1 3/8	1 3/8	1 3/4	1 3/4
Diameter, Overall (inches)	3 1/2	3 1/2	3 1/2	4 3/4	4 7/8	5 3/8	5 7/8	6 5/8	7 1/2	9 3/4



## Price Schedule

PIPE JOINT CLAMPS			
Size (inches)	Part Number	Sugg. List Price	Approx. Weight (lbs.)
1/2	089865	\$ 130.00	1
3/4	089864	\$ 130.00	1.12
1	089863	\$ 134.00	1.25
1 1/4	089862	\$ 145.00	2
1 1/2	089861	\$ 150.00	2.25
2	089860	\$ 160.00	2.5
2 1/2	089859	\$ 200.00	2.75
3	089858	\$ 233.00	4.25
4	089856	\$ 271.00	5.25
6	089854	\$ 371.00	7.75

Max Temp 300°F

## Installation Procedure

## Pipe Joint Clamp

1. Thoroughly clean the joint with a wire brush or scraper.
2. Assemble Gasket Container Ring over pipe with lip side toward fitting; leave joint between halves open about 1/8".
3. Pack gasket under Gasket Container Ring, making sure that the scarf joint in the gasket is flush.
4. Assemble Sliding Push Ring halves and slide under gasket container ring against gasket, and tighten Gasket Container Ring screws.
5. Assemble halves of Stationary Main Ring over Sliding Push Ring, tightening halves together securely.
6. Tighten set screws in the Stationary Main Ring to friction hold on pipe, and drive the ring forward to take out slack. This insures that all the drive of the thrust screws will be expended on the gasket later.
7. Tighten set screws tight so points bite into the pipe to prevent slip back.
8. Tighten the thrust screws evenly, all the way around, a turn at a time until the leak stops.
9. Pressure test the completed installation for leaks.
10. Before leaving, check for leaks.

Size (inches)	Working Pressure	Size (inches)	Working Pressure
1/2 - 2	1500 psi	4	750 psi
2 1/2 - 3	1000 psi	6	400 psi



## Service Saddle

### For Making Gas, Oil, & Water Service Connections

Model "SS"



- For gas, oil, & water connections
- Ductile iron construction, massive bolt
- Easily accessible nut
- Uniform bearing around pipe eliminates "crushing" pipe
- Gasket recessed - cannot blow out under high pressure

The Skinner-SEAL Service Saddle is made of nodular iron with plated steel bolt and nut. Skinner's Specially Compounded Buna-N gasket is placed in a recess to prevent blowing out under high pressure.

### Price Schedule

### Single Hinge Style

Pipe Size (inches)		Outlet Size	Part Number	Sugg. List Price	Approx. Weight (lbs.)	Pipe Size (inches)		Outlet Size	Part Number	Sugg. List Price	Approx. Weight (lbs.)
1 1/4	x	1/4	089814	\$ 68.00	2	2 1/2	x	3/4	089785	\$ 105.00	4
		3/8	089813	\$ 68.00	2			1	089783	\$ 105.00	4
		1/2	089812	\$ 68.00	2			1 1/4	089782	\$ 105.00	4
		3/4	089811	\$ 68.00	2			1 1/2	089781	\$ 105.00	4
		1	089809	\$ 68.00	2						
1 1/2	x	3/8	089807	\$ 79.00	2.5	3	x	3/4	089773	\$ 124.00	5.75
		1/2	089806	\$ 79.00	2.5			1	089771	\$ 124.00	5.75
		3/4	089805	\$ 79.00	2.5			1 1/4	089770	\$ 124.00	5.75
		1	089803	\$ 79.00	2.5			1 1/2	089769	\$ 124.00	6.5
2	x	1/2	089801	\$ 99.00	3.75	3 Cl	x	3/4	089767	\$ 115.00	6.25
		3/4	089799	\$ 99.00	3.75			1	089765	\$ 115.00	6.25
		1	089797	\$ 99.00	3.75			1 1/4	089763	\$ 115.00	6.25
		1 1/4	089795	\$ 99.00	3.75			1 1/2	089762	\$ 115.00	7
		1 1/2	089794	\$ 99.00	3.75			2	089760	\$ 115.00	7
2 Cl	x	1/2	089793	\$ 99.00	4.5	4	x	3/4	089756	\$ 135.00	7
		3/4	089792	\$ 99.00	4.5			1	089754	\$ 135.00	7
		1	089790	\$ 99.00	4.5			1 1/4	089753	\$ 135.00	7
		1 1/4	089788	\$ 99.00	4.5			1 1/2	089752	\$ 135.00	7
		1 1/2	089787	\$ 99.00	4.5			2	089751	\$ 135.00	7
						4 Cl	x	3/4	089749	\$ 121.00	8
								1	089748	\$ 121.00	8
								1 1/4	089746	\$ 121.00	8
								1 1/2	089745	\$ 125.00	8
								2	089744	\$ 125.00	8

Note: To add a "grounding lug" to the Service Saddle, just add a "G" to the end of the part number and increase the Sugg. List Price by \$5.00.



## Single Hinge Style

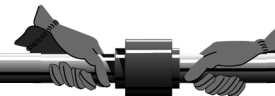
Pipe Size (inches)		Outlet Size	Part Number	Sugg. List Price	Approx. Weight (lbs.)
6	x	3/4	<b>089735</b>	\$ 240.00	13.5
		1	<b>089733</b>	\$ 240.00	13.5
		1 1/4	<b>089731</b>	\$ 240.00	14.25
		1 1/2	<b>089729</b>	\$ 240.00	18
		2	<b>089728</b>	\$ 240.00	18
7 OD (6 CI)	x	3/4	<b>089725</b>	\$ 250.00	15.5
		1	<b>089721</b>	\$ 250.00	15.5
		1 1/4	<b>089718</b>	\$ 250.00	15.5
		1 1/2	<b>089716</b>	\$ 250.00	15.5
		2	<b>089714</b>	\$ 250.00	15.5
8	x	3/4	<b>089710</b>	\$ 340.00	23.25
		1	<b>089709</b>	\$ 340.00	23.25
		1 1/4	<b>089708</b>	\$ 340.00	23.25
		1 1/2	<b>089707</b>	\$ 340.00	31.5
		2	<b>089706</b>	\$ 340.00	31.5
8 CI	x	3/4	<b>089705</b>	\$ 400.00	24.5
		1	<b>089703</b>	\$ 400.00	24.5
		1 1/4	<b>089701</b>	\$ 400.00	24.5
		1 1/2	<b>089700</b>	\$ 400.00	31.25
		2	<b>089698</b>	\$ 400.00	31.25
10	x	3/4	<b>089694</b>	\$ 635.00	25.5
		1	<b>089693</b>	\$ 635.00	25.5
		1 1/4	<b>089692</b>	\$ 635.00	28.5
		1 1/2	<b>088023</b>	\$ 635.00	28.5
		2	<b>089691</b>	\$ 635.00	28.5
10 CI	x	3/4	<b>089830</b>	\$ 635.00	25.5
		1	<b>089690</b>	\$ 635.00	25.5
		1 1/4	<b>089689</b>	\$ 635.00	31.5
		1 1/2	<b>088024</b>	\$ 635.00	31.5
		2	<b>089686</b>	\$ 635.00	31.5
12	x	3/4	<b>089682</b>	\$ 649.00	45
		1	<b>089681</b>	\$ 649.00	45
		1 1/4	<b>089837</b>	\$ 649.00	45
		1 1/2	<b>088025</b>	\$ 649.00	45
		2	<b>089679</b>	\$ 649.00	45
12 CI	x	3/4	<b>089833</b>	\$ 649.00	55
		1	<b>089676</b>	\$ 649.00	55
		1 1/4	<b>089675</b>	\$ 649.00	55
		1 1/2	<b>089674</b>	\$ 649.00	55
		2	<b>089673</b>	\$ 649.00	55

## Installation Procedure

## Service Saddle

- Thoroughly clean the area with a wire brush where the Service Saddle will be installed. This will help insure a bubble tight gasket seal.
- Make sure gasket is properly positioned and firmly bonded to top half of saddle before you place saddle on pipe or gas line. If gasket is not properly positioned or loose, dangerous or even fatal gas leakage may occur.
- Place the Saddle in position, and tighten the bolt to the proper torque (see table below).
- Make the service line connection with the method chosen, eg. drilling device, etc.
- Pressure test the completed installation for leaks.
- Check for leaks before leaving.

Size (inches)	Torque	Working Pressure	Size (inches)	Torque	Working Pressure
1 1/4	50 ft.lbs.	500 psi	6 x 3/4 to 6 x 1 1/4	60 ft.lbs.	200 psi
1 1/2	50 ft.lbs.	500 psi	6 x 1 1/2 & 6 x 2	60 ft.lbs.	200 psi
2 x 1/2 to 2 x 1 1/4	60 ft.lbs.	500 psi	8 x 3/4 to 8 x 1 1/4	150 ft.lbs.	200 psi
2 x 1 1/2	60 ft.lbs.	200 psi	8 x 1 1/2 & 8 x 2	150 ft.lbs.	250 psi
2 1/2	60 ft.lbs.	200 psi	10 x 3/4 to 10 x 2	150 ft.lbs.	250 psi
3 x 3/4 & 3 x 1	60 ft.lbs.	200 psi	12 x 3/4 to 12 x 2	150 ft.lbs.	200 psi
3 x 1 1/4 & 3 x 2	60 ft.lbs.	250 psi			
4 x 3/4 to 4 x 1 1/4	60 ft.lbs.	300 psi			
4 x 1 1/2 & 4 x 2	60 ft.lbs.	200 psi			



## Saddle Tee

**For Making Gas and Water Connections**



**Model "ST"**  
(With iron pipe thread)

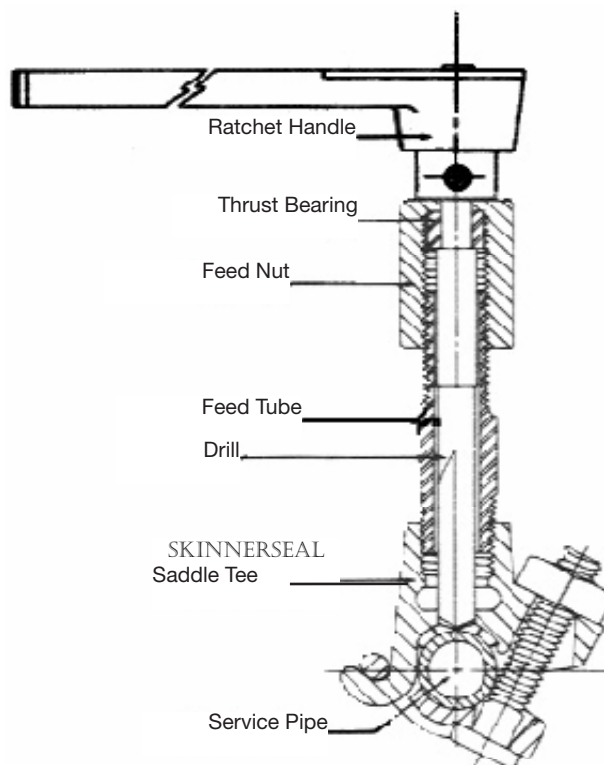
The Skinner Saddle Tee is particularly recommended for installing garden gas lights, gas grills, automatic home laundries and other appliances. It takes the place of a tee, union and nipple in one fixture. No pipe cutting or threading is necessary. The cutting in

of ordinary tees is sometimes extremely difficult. With the Skinner-Seal Saddle Tee, the job becomes fast and simple installation costs are substantially reduced.

Use of our Saddle Tee frequently saves installing a long run of pipe or tubing as connections to the pipe can often be made closer to the appliance.

The Saddle Tee is made of ductile iron with a Buna-N gasket.\* The single heavy steel bolt is plated. Maximum working pressure is 200 psi.

\*Some Saddle Tees assembled before Jan. 1, 2003, may have other gasket material.



*Skinner Ratchet Handle Drilling  
Device simplifies installation*

### Model "DD" Small Drilling Device

Model Number	No. 1	No. 2A	No. 2
Outlet Size	1/4" NPT	3/8"	1/2"
Drill Size	5/16"	13/32"	13/32"
Drill Part No.	081298	081299	081299

Max Temp 250°F



## Price Schedule

### Saddle Tee

Pipe Size (inches)	Outlet Size (inches)	Part Number	Sugg. List Price	Approx. Weight (lbs.)
1/2	1/4	<b>089247</b>	\$ 48.00	1
1/2	3/8	<b>089246</b>	\$ 48.00	1
1/2	1/2	<b>089244</b>	\$ 48.00	1
3/4	1/4	<b>089242</b>	\$ 50.00	1.12
3/4	3/8	<b>089241</b>	\$ 52.00	1.12
3/4	1/2	<b>089240</b>	\$ 52.00	1.12
3/4	3/4	<b>089238</b>	\$ 52.00	1.12
1	1/4	<b>089237</b>	\$ 64.00	1.12
1	3/8	<b>089236</b>	\$ 64.00	1.12
1	1/2	<b>089234</b>	\$ 64.00	1.12
1	3/4	<b>089232</b>	\$ 69.00	1.12
1	1	<b>089231</b>	\$ 69.00	1.12

### Installation Procedure

### Saddle Tee

1. Thoroughly clean the area with a wire brush where the Saddle Tee will be installed. This will help insure a bubble tight gasket seal.
2. Place the Saddle Tee in the position chosen, and tighten the bolt to the proper torque.
3. Make the service line connection with the method chosen, eg. drilling device, etc.
4. Pressure test the completed installation for leaks.
5. Before leaving, check for leaks.



## Drilling Devices

### Drilling Holes in Mains Through Various Service Fittings

The Skinner-SEAL Drilling Device is a high grade Ratchet-Handled Machine for drilling a hole in the main through various service fittings.

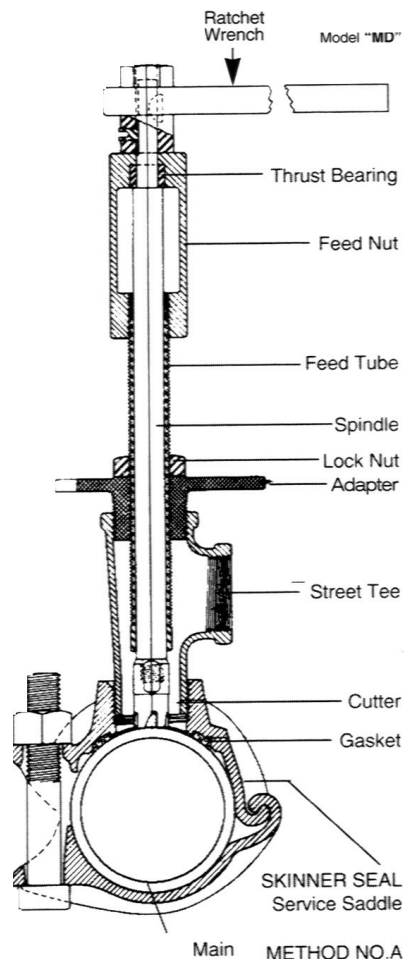
The machine consists of parts as shown in the sketch at the right. Note that the feed tube on this Drilling Device is adjusted so the lower end is just above the cutter when the cutter is resting on a pipe at the start of the drilling operation. This forms a guide which holds the spindle to its position and prevents twisting action on the shell cutters.

Cutters are made of an alloy steel, combining toughness and hardness, and have an unusually long life.

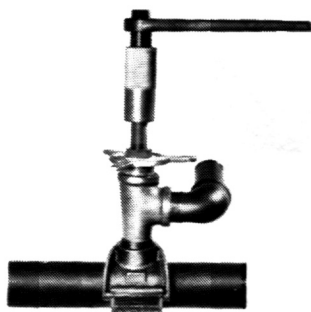
#### To order Drilling Equipment

First identify your service method in the tables below and on the opposite page. Then, on the first line of the table, select the column headed by the size of the top outlet of whatever fitting is used. In the column under that size, you will find the model number of the drill device and adapter required. Beneath that, you will find various cutters listed from which to select the number or size desired. These three items Drill Device, Adapter and Cutter-make up the drilling equipment you require.

**Recommended for non-pressurized installations.**



#### Method "A" Street Tee in Service Saddle



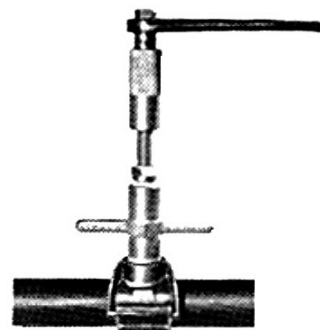
Top Thread of Tee (inches)	3/4		1		1 1/4		1 1/2		2	
Drill Device No.	4		7		7		7		7	
Adapter No.	1		2		3		4		5	
Stock Cutter Numbers and Diameters that can be used under this method.	No.	Dia.(in.)	No.	Dia.(in.)	No.	Dia.(in.)	No.	Dia.(in.)	No.	Dia.(in.)
	1	5/8	22	7/8	7	1	19	1 3/16	21	1 7/8
	2	1/2	11	3/4	22	7/8	7	1	20	1 3/8
	3	3/8	2	1/2	2	1/2	11	3/4	19	1 3/16
	4	1/4	4	1/4	4	1/4	2	1/2	7	1



## Method "B"

### Service Saddle without Street Tee

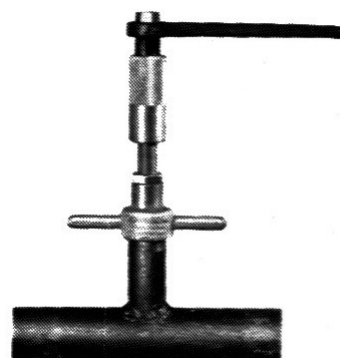
Saddle Outlet (inches)	3/4		1		1 1/4		1 1/2		2	
Drill Device No.	4		7		7		7		7	
Adapter No.	14		15		16		23		24	
Stock Cutter Numbers and Diameters that can be used under this method.	No.	Dia. (in.)	No.	Dia. (in.)	No.	Dia. (in.)	No.	Dia. (in.)	No.	Dia. (in.)
	11	3/4	7	1	19	1 3/16	20	1 3/8	21	1 7/8
	1	5/8	11	3/4	7	1	19	1 3/16	20	1 3/8
	2	1/2	2	1/2	11	3/4	7	1	19	1 3/16
	4	1/4	4	1/4	2	1/2	11	3/4	7	1



## Method "C"

### Tee or Pipe Nipple Welded to Main

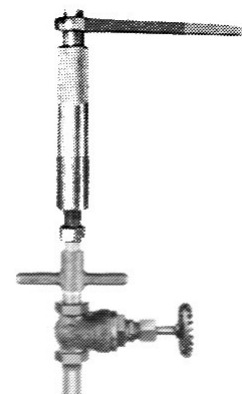
Nipple Size (inches)	3/4		1		1 1/4		1 1/2		2	
Drill Device No.	4		7		7		7		7	
Adapter No.	6		7		8		9		10	
Stock Cutter Numbers and Diameters that can be used under this method.	No.	Dia. (in.)	No.	Dia. (in.)	No.	Dia. (in.)	No.	Dia. (in.)	No.	Dia. (in.)
	11	3/4	7	1	19	1 3/16	20	1 3/8	21	1 7/8
	1	5/8	11	3/4	7	1	7	1	19	1 3/16
	2	1/2	2	1/2	11	3/4	11	3/4	7	1
	4	1/4	4	1/4	2	1/2	2	1/2	11	3/4



## Method "D"

### Valve Connected to Main

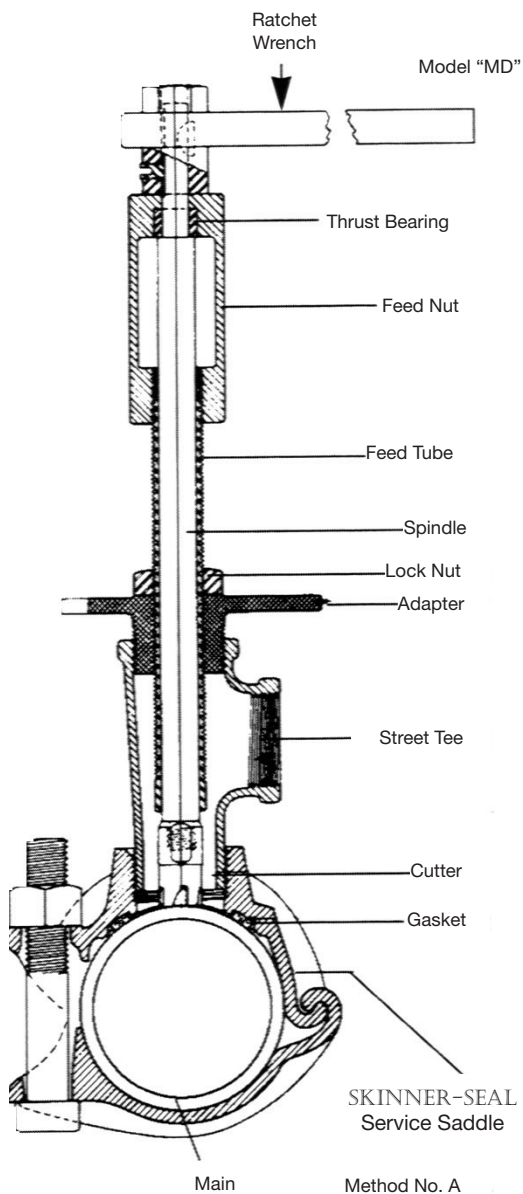
Top Outlet (inches)	1		1 1/4		1 1/2		2	
Drill Device No.	10		10		10		10	
Adapter No.	27		26		25		22	
Stock Cutter Numbers and Diameters that can be used under this method	No.	Dia. (in.)	No.	Dia. (in.)	No.	Dia. (in.)	No.	Dia. (in.)
	7	1	19	1 3/16	20	1 3/8	21	1 7/8
	11	3/4	7	1	19	1 3/16	20	1 3/8
	2	1/2	11	3/4	7	1	19	1 3/16
	4	1/4	2	1/2	11	3/4	7	1



*Cutter Diameter is Limited to the Maximum Full Opening of the Valve*



## Drilling Devices Parts List



DESCRIPTION	MODEL DD		MODEL MD		
<b>Drill Device Complete</b>	<b>089376 #1</b>	<b>089374 #2A</b>	<b>089373 #4</b>	<b>089371 #7</b>	<b>089370 #10</b>
Ratchet Wrench Only	081380 170.00	081380 170.00	081290 195.00	081290 195.00	081290 195.00
Ratchet Adapter Only	081288 78.00	081288 78.00	081295 114.00	081295 114.00	081295 114.00
Feed Tube	081303 65.00	081305 65.00	081308 72.00	081310 56.00	081309 88.00
Feed Nut	081313 50.00	081313 50.00	081314 65.00	081314 65.00	081315 220.00
Woodruff Key	-	-	081323 3.35	081323 3.35	081323 3.35
Thrust Bearing	081320 26.00	081320 26.00	081321 26.00	081321 26.00	081321 26.00
Spindle	-	-	081381 72.00	081381 72.00	081381 72.00
Allen Wrench	-	-	081319 3.35	081319 3.35	081319 3.35
Allen Set Screw	-	-	081326 2.20	081326 2.20	081326 2.20
Lock Nut	-	-	-	081324 3.35	-
Drill	081298 103.00	081299 103.00	-	-	-
<b>OPTIONAL PARTS</b>					
Spindle Extension	-	-	2" 081335 75.00	2" 081335 75.00	2" 081335 75.00
				8" 081332 94.00	



## Drilling Devices

Drilling Device Model No.	Skinner Part No.	Use with Tee Outlet	With Ratchet?	Suggested List Price	Shipping Wt. (Lbs)
1	089376	1/4"	Yes	\$ 478.00	4
2A	089374	3/8"	Yes	\$ 478.00	4
2	089375	1/2"	Yes	\$ 478.00	4
4	089373	3/4"	Yes	\$ 631.00	15
4	088503	3/4"	No	\$ 468.00	14
7	089371	1" - 2"	Yes	\$ 631.00	15
7	088486	1" - 2"	No	\$ 468.00	14
10	089370	1" - 2"	Yes	\$ 783.00	17
10	088500	1" - 2"	No	\$ 546.00	16

Tapping Compound for use with Shell Type Cutters is Skinner P/N# 082033 \$28.00 per 14 oz. Can.

## Cutters

Cutter No.	Type	Diameter	P/N No.	List Price
1	Drill	5/8"	089367	\$ 159.00
2	Drill	1/2"	089366	\$ 176.00
3	Drill	3/8"	089365	\$ 159.00
4	Drill	1/4"	089364	\$ 159.00
7	Shell	1"	089363	\$ 176.00
11	Shell	3/4"	089362	\$ 213.00
19	Shell	1 3/16"	089360	\$ 213.00
20	Shell	1 3/8"	089359	\$ 176.00
21	Shell	1 7/8"	089358	\$ 256.00
22	Shell	7/8"	089357	\$ 213.00
23	Shell	1 1/4"	089356	\$ 213.00
26	Shell	1 1/2"	089355	\$ 186.00

## Adapters

Adapt No.	Use With	Desc	P/N No.	List Price
1	DD #4	3/4M x 1/2F	089354	\$ 256.00
6	DD #4	3/4F x 1/2F	089349	\$ 256.00
14	DD #4	3/4M x 1/2F	089342	\$ 256.00
22	DD #4	2M x 1/2F	089338	\$ 256.00
25	DD #4	1 1/2M x 1/2F	089335	\$ 256.00
26	DD #4	1 1/4M x 1/2F	089334	\$ 256.00
27	DD #4	1M x 1/2F	089333	\$ 256.00
2	DD #7 & #10	1M x 7/8F	089353	\$ 256.00
3	DD #7 & #10	1 1/4M x 7/8F	089352	\$ 256.00
4	DD #7 & #10	1 1/2M x 7/8F	089351	\$ 256.00
5	DD #7 & #10	2M x 7/8F	089350	\$ 256.00
7	DD #7 & #10	1F x 7/8F	089348	\$ 256.00
8	DD #7 & #10	1 1/4F x 7/8F	089347	\$ 256.00
9	DD #7 & #10	1 1/2F x 7/8F	089346	\$ 256.00
10	DD #7 & #10	2F x 7/8F	089345	\$ 340.00
15	DD #7 & #10	1M x 7/8F	089341	\$ 256.00
16	DD #7 & #10	1 1/4M x 7/8F	089340	\$ 256.00
23	DD #7 & #10	1 1/2M x 7/8F	089337	\$ 256.00
24	DD #7 & #10	2M x 7/8F	089336	\$ 256.00



## Terms and Conditions of Sale

*Subject to change without notice*

### TERMS OF PAYMENT

All orders are accepted for shipment, F.O.B. shipping point, freight collect, net 30 days.  
Price and trade discounts are subject to change without notice.  
Material billed at prices in effect on the day order is received.  
Orders less than \$ 250 net are subject to a \$ 25.00 handling charge.

### RETURNED MATERIAL

No materials may be returned without first obtaining a Return Material Authorization and shipping instructions. Returned materials are subject to our inspection and a 20% restocking charge. If necessary to recondition the returned item(s), the charges will be at the buyer's expense.

We assume no obligation for materials returned without our permission.

### CLAIMS

Claims for shortages must be made within 30 days after receipt of shipment.

## Warranty

The Skinner Company, Inc. warrants this product against defects in materials and workmanship for a period of one year from the date the product was shipped by Skinner to the original purchaser. During such one-year period, provided that the original purchaser continues to own the product, Skinner will, at its sole option, repair any defects, replace the product, or repay the purchased price.

This warranty will be void if the purchaser fails to observe the procedures for installation, operation or service of the product as set forth in the installation instructions for the product or if the defect is caused by tampering, physical abuse or misuse of the product.

THE SKINNER CO. INC. SPECIFICALLY DISCLAIMS ALL IMPLIED WARRANTIES INCLUDING THOSE OF MERCHANTABILITY OR OF FITNESS FOR A PARTICULAR PURPOSE. UNDER NO CIRCUMSTANCES WILL SKINNER BE LIABLE FOR INCIDENTAL OR CONSEQUENTIAL DAMAGES OF ANY KIND WHATSOEVER.

In the event of a malfunction of the product, consult your Skinner Clamp distributor or the Skinner Company.



# THE SKINNER



# COMPANY

**The Skinner Company, Inc.**  
1519 Evans Pond Road  
Greenwood, SC 29649

**Distributed by:**

Phone: (864) 953-9618  
Toll Free: (877) 923-7700  
Fax: (864) 953-9724

**Email: [sales@skinnerco.com](mailto:sales@skinnerco.com)**  
[www.skinnerco.com](http://www.skinnerco.com)